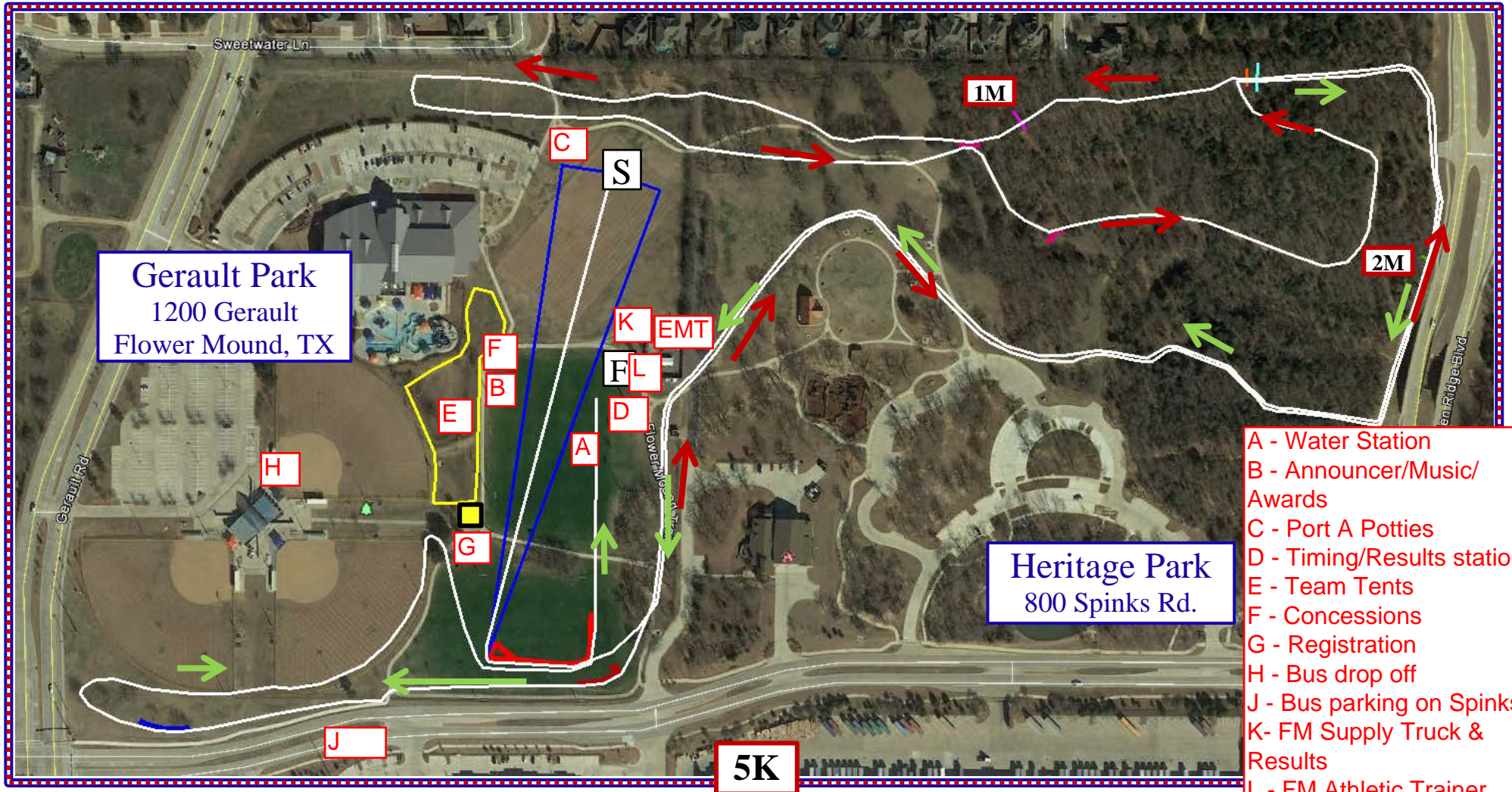


# 2017 Flower Mound HS CC Invitational

16 September 2017



- A - Water Station
- B - Announcer/Music/Awards
- C - Port A Potties
- D - Timing/Results station
- E - Team Tents
- F - Concessions
- G - Registration
- H - Bus drop off
- J - Bus parking on Spinks
- K - FM Supply Truck & Results
- L - FM Athletic Trainer

